



1 King St (PO Box 243) Busselton WA 6280  
Ph: (08) 9752 2522 Fax: (08) 9754 2866  
Email: [gbycbsn@westnet.com.au](mailto:gbycbsn@westnet.com.au)  
Website: [www.gbyc.com.au](http://www.gbyc.com.au)



## **SAILING INSTRUCTIONS**

AUSTRALIA DAY REGATTA

*Saturday 25th to Sunday 26<sup>th</sup> January 2020*

# Sailing Instructions Geographe Bay Yacht Club (Inc)

## 1. ORGANISING AUTHORITY (OA)

The Organising Authority will be Geographe Bay Yacht Club (Inc) (GBYC) 1 King St, Busselton WA.

## 2. Rules

The regatta will be governed by the rules as defined in the Racing Rules of Sailing (RRS), the Australian Sailing Special Regulations, the rules of the respective Classes (except as any of these are altered by the Sailing Instructions), and by the Sailing Instructions.

1.2 The sailing instructions (SI's) for racing at GBYC will be their standard sailing instructions for the current season, including the courses to be sailed which will be provided at the regatta meeting and these SI's.

1.3 Flag U may be used as the preparatory signal.

1.4 Rule 44.1 is changed so that the Two-Turns Penalty is replaced by the One-Turn Penalty.

## 3. Entries

2.1 All skippers are required to complete the sign on form before each race and sign off after each race session

2.2 All competitors shall have an Australian Sailing registration number.

## 4. Notice to Competitors

Notices to competitors will be posted on the Official Notice board located outside the committee room.

## 5. Changes to Sailing Instructions

Any changes to the Sailing Instructions will be posted not less than 1 hour before the first race it will affect, except that any change in the Schedule of Races will be posted by 1800 hours on the day before it will take effect.

## 6. Signals Made Ashore

5.1 Signals made ashore will be displayed on the control tower signal mast at the western end of the main clubhouse.

5.2 When flag AP is displayed ashore, '1 minute' is replaced with 'not less than 15 minutes' in Race Signal AP.

## 7. Schedule of Races

Races are scheduled as per Sailing Program.

## 8. Class Flag

Class Flags will be allocated at the meeting prior to each race.

## 9. Racing Area

The racing area will be in Geographe Bay adjacent to Geographe Bay Yacht Club.

## 10. The Course

10.1 Illustration 'A' shows the courses including the order in which marks are to be passed, and the side on which each mark is to be left (port).

- 10.2 If it is deemed necessary to set a course with Starboard roundings, this will be signalled by a green flag displayed on the committee boat, no later than the warning signal.
- 10.3 All boats shall proceed from the final mark shown on the course diagram to the Southern Seas Buoy, which is a yellow Spar Buoy with Blue bands, approximately 300 metres east of the finish line. This mark is to be rounded in a starboard direction before proceeding to the finish line.

## **11. Marks**

Marks will be large Yellow Pyramid buoys with 2 black bands. Alternate marks may be set and will be announced at the briefing.

Clearance Buoy may be used.

Southern Seas Mark is a Yellow Stick Mark with Blue Bands.

## **12. The Start**

- 11.1 Races will be started by using rule 26. Classes will start in the order allocated at the Competitor's Meeting.
- 11.2 The starting line will be between a mast or staff displaying an orange flag on the Committee Boat at the starboard end and the port end starting mark which will be an orange buoy with an orange flag.
- 11.3 A buoy may be streamed from the Committee Boat. For the purpose of the application of RRS the buoy is deemed to be a permanent part of the Committee Boat and any boat touching the buoy or passing between it and the Committee Boat shall be deemed to have touched the Committee Boat.
- 11.4 Boats whose Warning Signal has not been made shall avoid the starting area.
- 11.5 A boat starting later than ten minutes after her Starting Signal will be scored 'Did Not Start'. This changes rule A4.1.

## **13. Recalls**

- 12.1 Recalls will be signalled in accordance with racing rules 29.1 & 29.2.
- 12.2 When a general recall has been signalled, the recalled class shall then accept the starting signal for the last scheduled event as its warning signal. If more than one class has a general recall, then they shall start in the sequence set out initially.

## **14. Change of the Position of the Next Mark**

To change the position of the next mark, the Race Committee will move the original mark (or move the finish line) to a new position. The change will be signalled before the leading boat has begun the leg, although the new mark may not yet be in the new position. Any mark to be rounded after rounding the moved mark may be relocated without further signalling to maintain the course configuration.

## **15. The Finish**

- 14.1 The finishing line will be an extension of an imaginary line between the control tower and the V marker on the beach. The extremities will be indicated by a red stick mark (IDM) at the inner end and a green stick (ODM) at the outer end. Boats shall pass between the IDM and the ODM when finishing.
- 14.2 No boat shall pass through the finishing line at any time after the starting signal for their class other than to finish the race. Breach of this instruction will cause disqualification.

14.3 A sound signal will be made as the first boat of each class crosses the line. No signal will be given to signify the crossing of the line by the other boats.

## **16. Penalty Systems**

15.1 Rule 44.1 is changed so that the Two-Turns Penalty is replaced by the One-Turn Penalty.

15.2 A boat that has taken a penalty or retired under rule 31 or 44.1 shall complete an acknowledgement form at the race office within the protest time limit.

## **17. Time Limits**

16.1 The time limit will be two hours. See RRS 35.

16.2 The decision to shorten, postpone or abandon a race will be the sole discretion of the Race Officer.

## **18. Protests and Requests for Redress**

17.1 Protest forms are available at the Race Office. Protests shall be delivered there within one hour of the last boat's finishing time.

17.2 Notices will be posted on the official notice board within 30 minutes of the Protest Time Limit to inform competitors of hearings in which they are parties or named as witnesses.

## **19. Arbitration**

18.1 Rule 44.1 is changed to permit a boat that has broken a rule of Part 2, Part 4 or rule 31 to take a penalty after racing but prior to any protest hearing. Her penalty shall be scoring penalty equal to a finishing place mid-way between the boat's actual finishing place and the score for a disqualification. Half points shall be disregarded and the points of other boats shall not be adjusted.

18.2 An arbitration hearing will be conducted for all protests lodged in accordance with rule 61 which allege an infringement of a rule of Part 2, Part 4 or rule 31. Such hearings will be held subsequent to the protest being lodged and prior to the protest hearing.

18.3 The time and place of the arbitration hearing will be decided by the arbitrator and such advice may be given verbally. One representative of each boat will attend the arbitration hearing and no witnesses will be allowed. The arbitrator will decide the manner in which testimony is given.

18.4 After taking testimony, the arbitrator will make one of the following conclusions:

a) The protest does not comply with rule 61 and the protestor should withdraw the protest.

b) The matter shall proceed to a protest hearing. This may be because rules not suited to arbitration may be involved or because evidence is too complex or divergent or because injury, serious damage or a significant advantage may have occurred or because of the apparent severity of the alleged infringement or for any other reason decided by the arbitrator.

c) No rule was broken and the protestor should withdraw the protest.

d) A rule was broken by one or more of the boats involved, the infringing boat(s) may accept a scoring penalty as detailed above and if so accepted, the protestor should withdraw the protest.

19.5 An arbitration hearing shall not be re-opened. No conclusion of an arbitrator shall be subject to appeal or be grounds for redress.

19.6 Should the protest proceed to a protest hearing then the arbitrator may be a member of the Protest Committee. Any evidence given by an arbitrator during a protest hearing shall be given only in the presence of the parties to the hearing.

## **20. Scoring**

- 19.1 Races are scored using the Low Point scoring system of RRS Appendix A.4.1 will apply.
- 19.2 Four races are required to be completed to constitute a series.
- 19.3 When fewer than five races have been completed, a boat's series score will be the total of her race scores.
- 19.4 When five or more races are completed, a boat's series score will be the total of her race scores excluding her worst score.
- 19.5 Points will only be awarded to a registered entry of Helmsperson / Boat combination and are not transferable.

## **21. Radio Communications**

A boat shall neither make radio transmissions while racing nor receive radio communications not available to all boats. This restriction also applies to mobile telephones.

## **22. Prizes**

Prizes for series will be awarded to all classes with a minimum of 4 entries.

## **23. Disclaimer of Liability**

Competitors participate in the regatta entirely at their own risk. Attention is drawn to Rule 4, Decision to race. The organising authority will not accept any liability for material damage or personal injury or death sustained in conjunction with or prior to, during, or after the regatta.

### **WARNING:**

Sailing and activities associated with it involve risks of personal injury, loss and damage and even death. The risks include but are not limited to, the risk of injury from collision, capsizing, falling overboard, being trapped under the sail or boat after capsize and impact with equipment. Any of these events can also result in death. The risks involved in this activity are heightened by:

- Adverse weather conditions
- Inadequate training
- Fatigue
- Inexperience
- Failure to maintain the boat
- Failure to supply and use the recommended safety equipment
- Failure to observe the RRS and the Sailing Instructions.

This warning is given as a risk warning pursuant to Section 51 of the Civil Liability Act 2002 (as amended). Having given this risk warning, Geographe Bay Yacht Club will not be held liable for any personal injury or death, however it may occur.

## **24. Insurance – Please Provide copy at registration.**

Each participating boat shall be insured with valid Third-Party Liability Insurance with a minimum cover of \$5,000,000 (recommend \$10,000,000 for any one accident. By signing the entry form, Helmspersons are deemed to have made declaration they may have such cover.

**25. Safety Requirements**

Both helm and crew members shall wear, while on the water, approved buoyancy vests (PFD 2) in good order and repair, secured about their persons in a manner appropriate to the design of the garment. Cabin boats and fixed keelboats are exempted; however, they shall carry safety equipment in accordance with AYF Special Regulations Part 1 section 5.01.

**26. Handicaps**

It is the responsibility of each skipper to provide a valid handicap at the time of nomination.

**27. Yardsticks**

The Club will use its own yardstick system based on local conditions and local boats. Where there are sufficient race data for a class, a yardstick may be allocated for the regatta. It is important to remember that any modification away from the Class rules for a yacht will affect its yardstick.

---

**CAMPING**

Due to City of Busselton regulations, camping is permitted on the yacht club grounds. However, Caravans and Motor Homes are **NO LONGER** permitted.

**CLUB FACILITIES**

All club facilities will be open for the duration of the Regatta.

**MEALS**

Lunches and dinners will be available from the galley

**BAR FACILITIES**

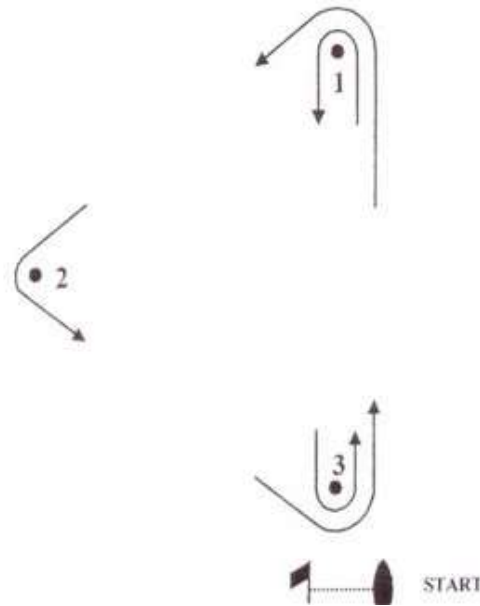
It is **ILLEGAL** to consume alcohol on the club premises if it is not purchased from the Yacht Club bar. The bar is fully licensed and able to supply take-away beers at competitive prices.

**PRESENTATIONS**

ASAP after sailing Saturday and Sunday.

## ILLUSTRATION A

### TRIANGLE – PORT COURSE



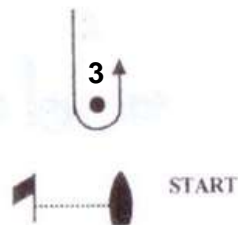
**Course 1**

1-2-3-1-3-1 (leave to Port) - Southern Seas - Finish

**Course 2**

1-2-3-1-3-1-2-3-1 (leave to Port) - Southern Seas - Finish

### WINDWARD / LEEWARD – PORT COURSE



**Course 3**

1-3-1-3-1- (leave to Port) - Southern Seas - Finish

**Course 4**

1-3-1-3-1-3-1 (leave to Port) - Southern Seas – Finish

Clearing marks may be laid if required.