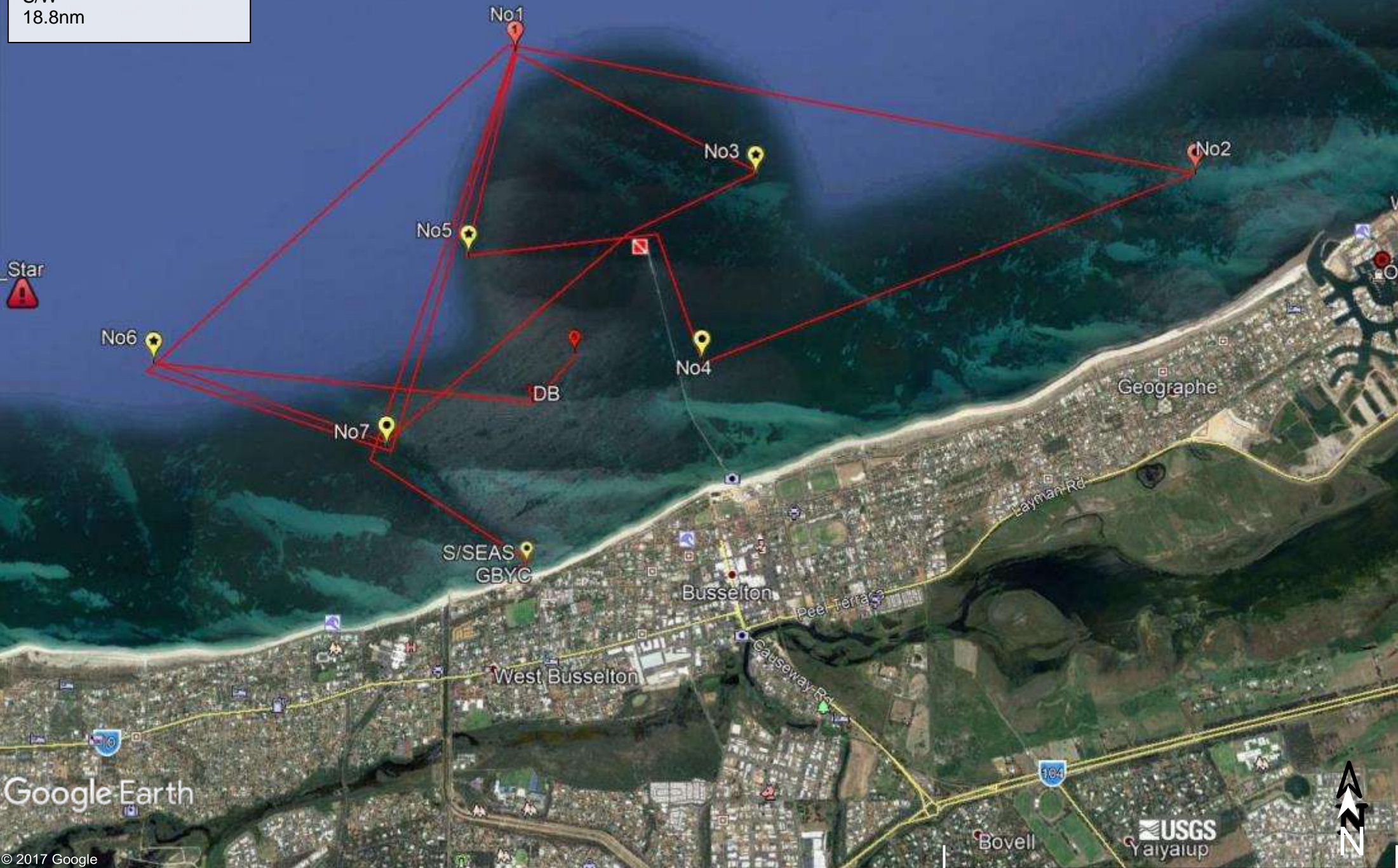


# Course 1 long

S/W  
18.8nm



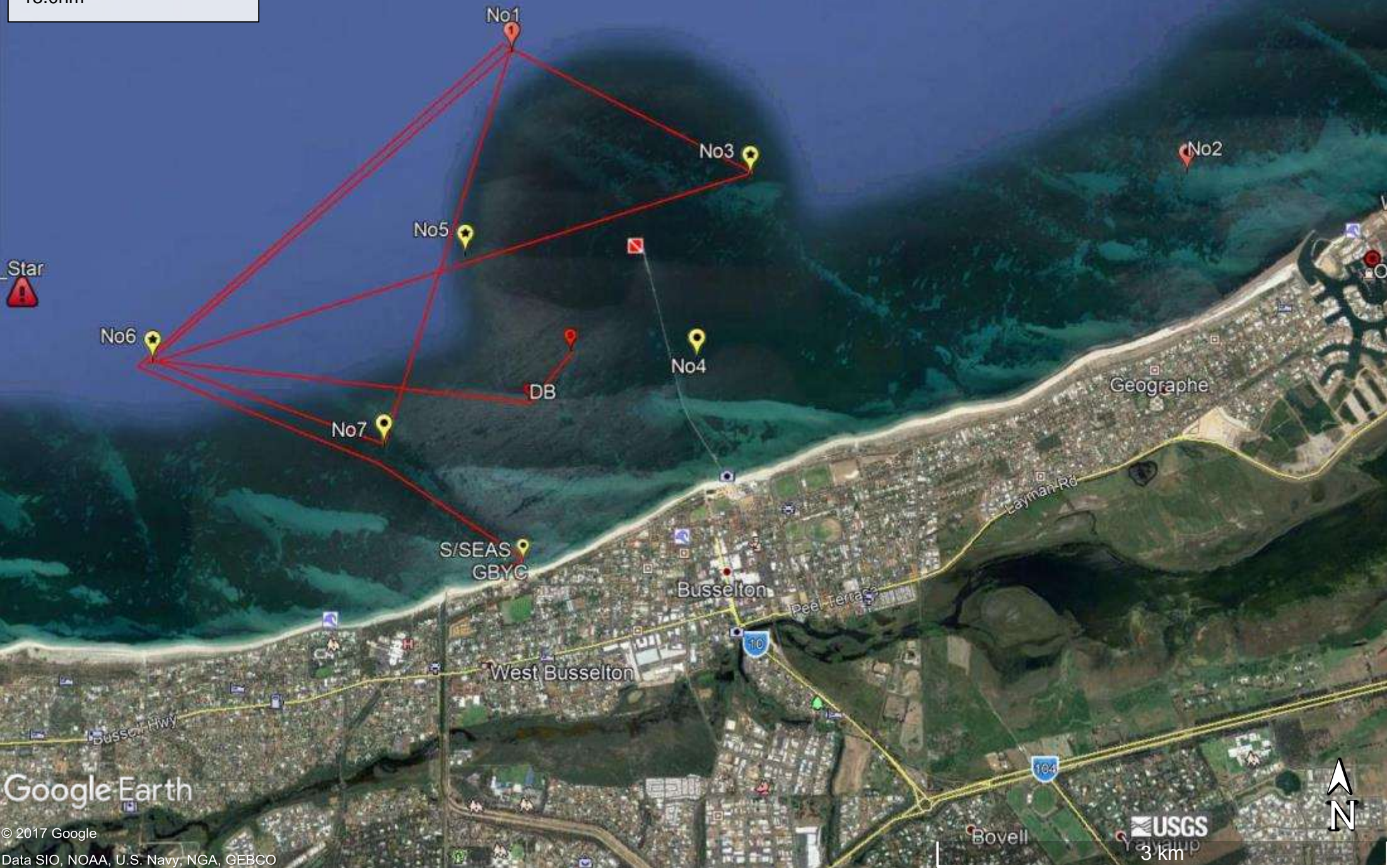
Google Earth

USGS  
Yaiyalup

3 km

# Course 2 short

S/W 2  
13.0nm



Google Earth

USGS  
3 km



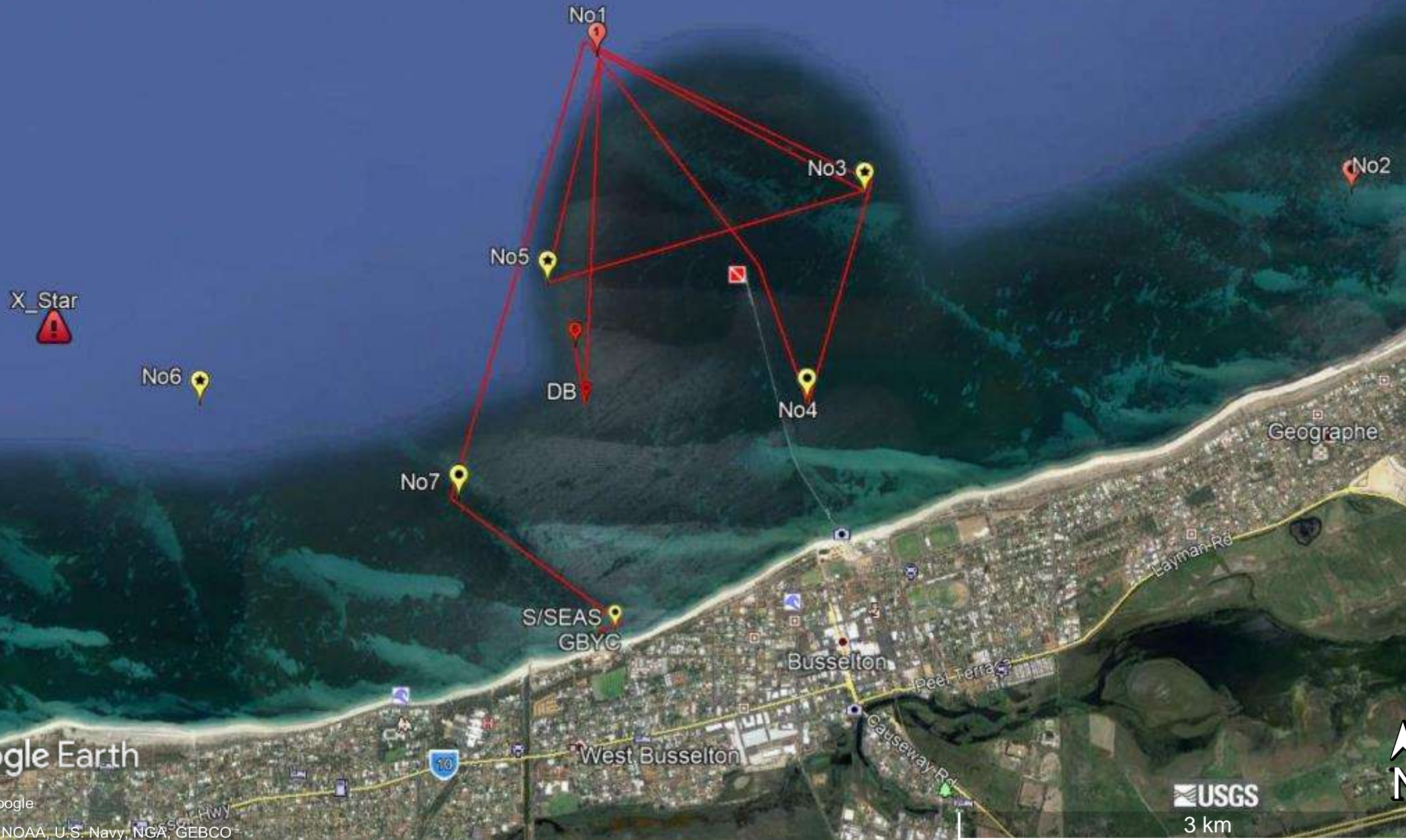
# Course 3 long

S  
10.0nm



# Course 4 short

S2  
10.0nm



# Course 5 long

W  
19.2nm



Google Earth

© 2017 Google  
Data SIO, NOAA, U.S. Navy, NGA, GEBCO

USGS

2 km

# Course 6 short

W2  
1 .2nm



Google Earth

© 2017 Google  
Data SIO, NOAA, U.S. Navy, NGA, GEBCO

USGS

2 km

# Course 7

E/NE  
14.7nm



# Course 8

N/W  
16.1nm



Google Earth

© 2017 Google  
Data SIO, NOAA, U.S. Navy, NGA, GEBCO

USGS

2 km

